



## Lambert Road, Brixton, SW2

2 bedroom flat - conversion for sale

**£585,000**

Share of Freehold

### Property Details

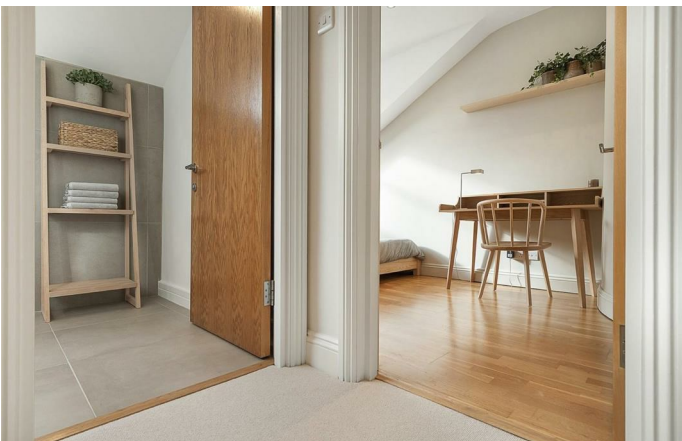
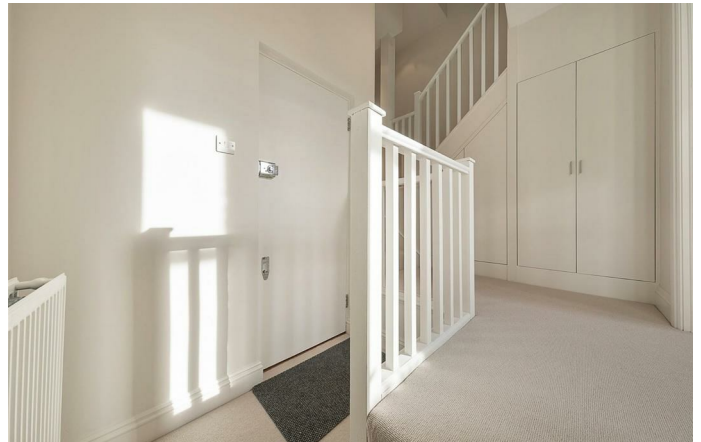
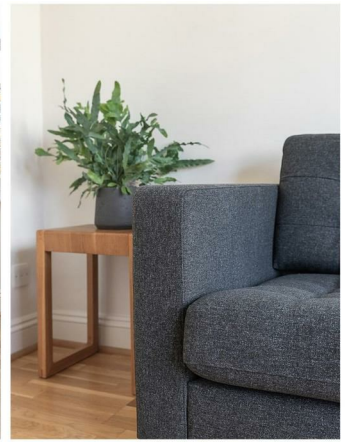
This spacious flat is in excellent condition throughout, the perfect blank canvas requiring no work, complete with fresh, neutral décor and tasteful finishes, allowing the purchaser the opportunity to move in hassle-free and stamp their own mark over time. The communal interior and exterior of the building have also undergone recent refurbishment and the property further benefits from access to a substantial South facing shared rear garden. Arranged over the first floor, a modern kitchen with plenty of storage and worktop space overlooks the rear gardens below. Nestled at the front of the building is a spacious separate living room, complete with a large bay window, perfect for lounging, dining and entertaining. The flat boasts high ceilings with a bright and airy atmosphere throughout. The second floor of the property comprises two genuine double bedrooms and a sleek, family-sized bathroom. The bedrooms sit at opposite ends of the building, perfect for sharers or anyone looking to let the spare room. Split over two floors and with the living space on the level below and the bedrooms configured upstairs, this property feels like a home.

Council tax band D

EPC rating D (58)

### Features

- Two double bedrooms
- Detached double fronted Victorian conversion
- 794 square feet of internal space
- Split over three levels
- Recently internally decorated and refurbished'
- Extensive renovation of the exterior and communal parts
- Shared South facing garden
- Clapham and Brixton within easy reach
- Secure bike storage
- Share of freehold and chain-free





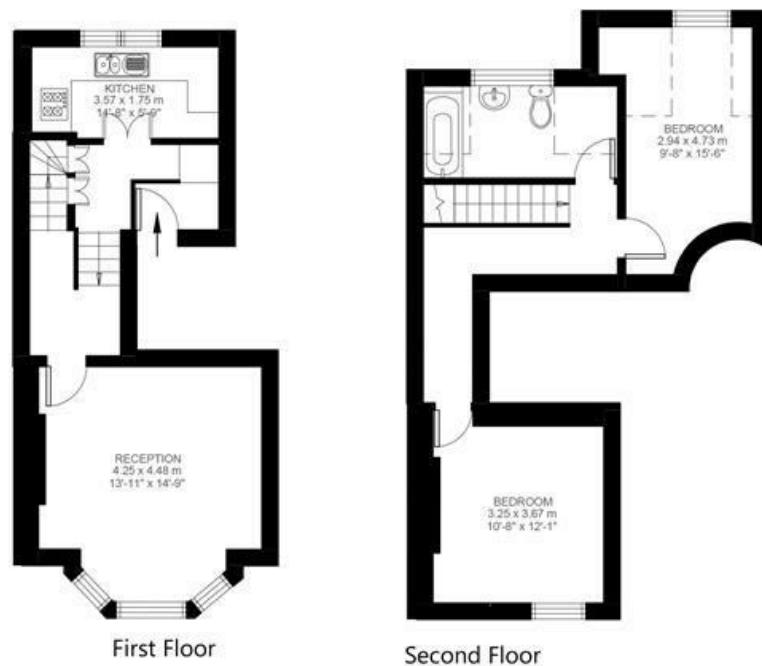


Lambert Road, Brixton, SW2

Lambert Road, Brixton Hill, SW2

2 Bedroom Flat

Approximate internal area: **794 sqft 74 sqm**



While we do try our very best, floor plans are produced as a guide only and we take no responsibility for the precise accuracy with which any property is represented.



Lambert Road, Brixton, SW2

